

St. Elias North Campus Building Project

Building The Future of Orthodoxy In Central Texas

A Vision for Growth, Faith, and Generations to Come



April 27 Presentation

St. Elias North Campus Building Project

Why We're Here



- Orthodoxy is thriving in Central Texas
- St. Elias is growing — and fast
- We must plan for the future

The Vision



- **An Expanded campus in Northwest Austin**
- **Designed to grow with our community**
 - **A Sacred Temple for 475 Worshipers**
 - **Multi-purpose Space-Classrooms & Social Hall**
 - **A Plan for a 2nd Phase Expansion**

Project Scope

Phase I-Focus on the Essentials



- **New Temple / Sanctuary**
- **Additional Classrooms**
- **Social hall (Refurbish current building)**
- **200+ Parking Spaces**
- **Dedicated Pastoral offices**

Phase II: Building A Community Center



- **Chapel in Temple (possible in Phase 1)**
- **Separate Education Building**
- **Multi-Purpose Center**
- **Amphitheater (future)**
- **Bell Tower (future)**

The New Temple



Temple Narthex



Narthex Iconography



Inside the Church Temple



Iconostasis of the Temple



Great Dome with Christ Pantokrator



375 Temple Seating with additional 100 Loft Seating For A Total Of 475 Seats (Doubling Current Capacity)



Temple Iconography



Chapel With An Adult Baptistry Potential Addition to Phase 1



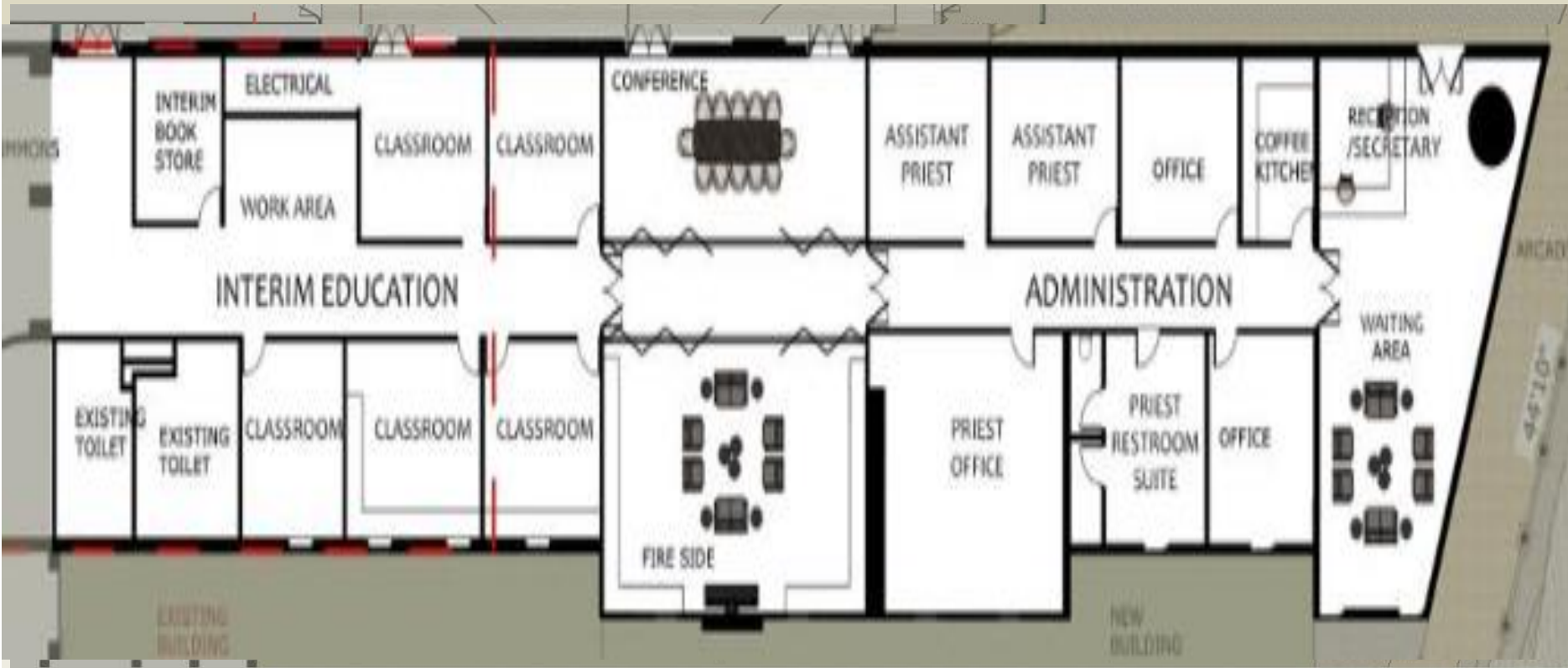
Chapel Dome & Iconography



Phase 1- Added Classrooms



Classroom Building Layout Phase 1



During Phase 1—This Building will primarily become Classrooms, ministry meeting space w/Priests' offices
During Phase 3—This Building will become Pastoral meeting and office Space

What Happens to Current Church Building During Phase 1?



Refurbished To Become Church Social Hall

200+ Parking during Phase 1 Surrounding the Campus



The Need Is Now!



- **Worship space at capacity in both campuses**
- **No room for additional classrooms**
- **Limited parking**
- **Growth expected to continue**

The Funding Plan



- **Total Phase 1: \$10 million**
 - 40% Pre-construction (\$4M)
 - 30% Pledges (3–5 years)
 - 30% Financing

Our Timeline



- **Spring 2025: Donor events, finalize design**
- **Summer 2025: Pledge drive**
- **Fall 2025: Secure permits, financing**
- **2026: Begin construction**

- **2027: Completion & consecration**

What Can You Do?



- Pray for Success
- Host or attend events
- Volunteer—Host or attend Events
- Share the vision
- Give sacrificially

Recognition & Naming Opportunities



- Opportunities for honoring loved ones
- Donor wall and naming available
- Leave a lasting legacy





**Thank you for being part of this journey
Let's build for the future — together**